

Egmont 236

5  2  2  2 

Ready to Build Plan

Dwelling 236m²

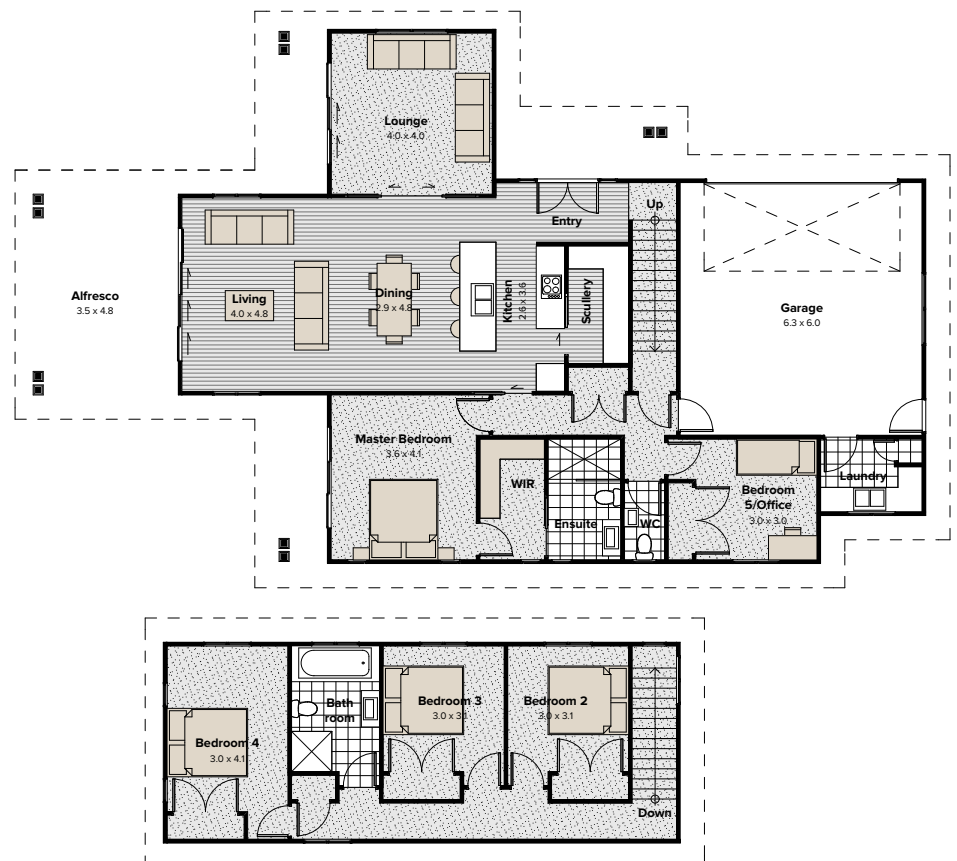


Graphics are an indication only

Space inside and out

This well-designed two-story plan helps you overcome the common challenge of having a spacious home as sections become smaller.

The open plan design features five bedrooms, multiple indoor and outdoor living, a walk-in pantry and separate laundry, providing you with space both inside and out.



Ground Floor	172m²
First Floor	64m²
Garage Area	38m ²
Length	18.5m
Width	13.3m